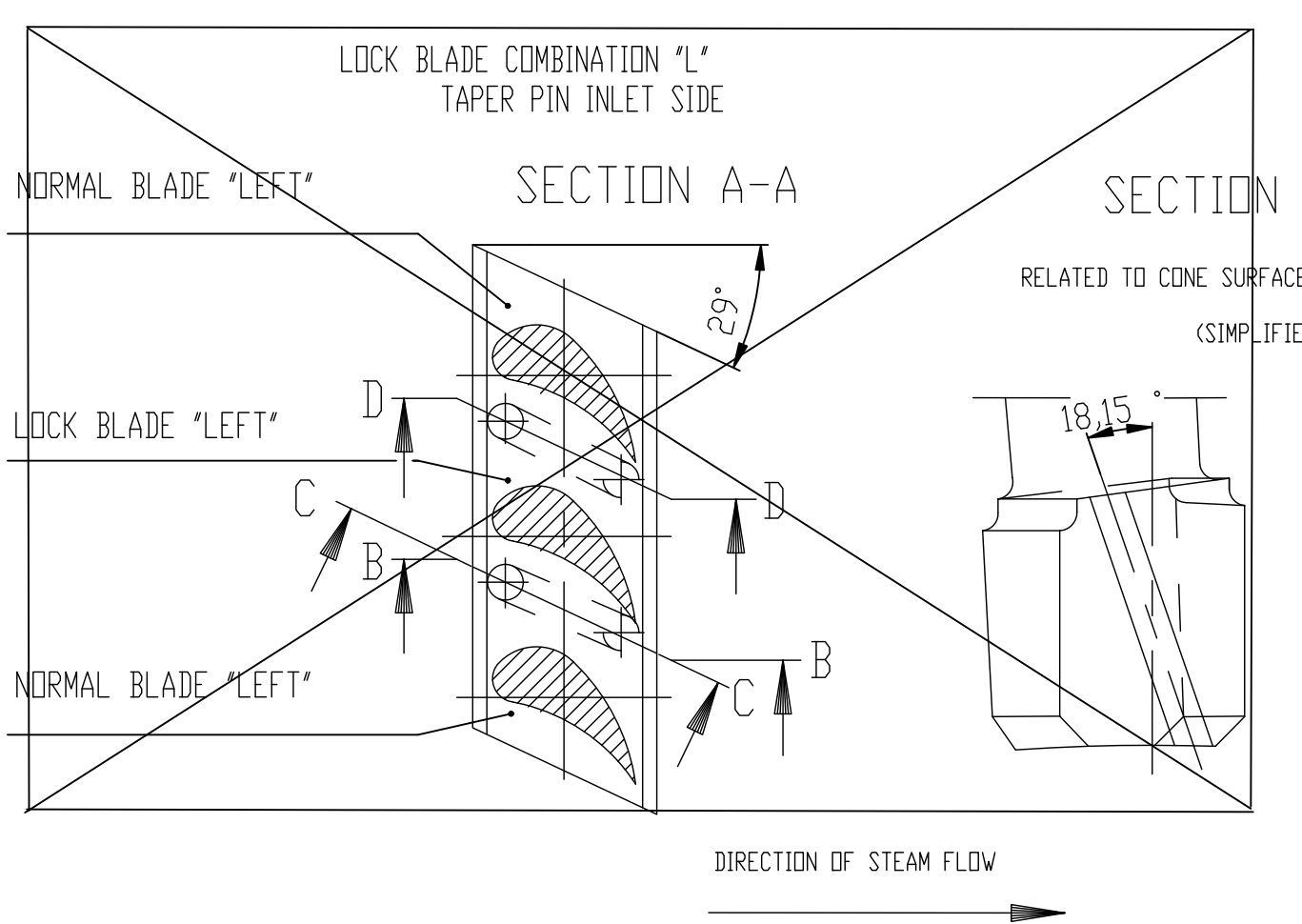
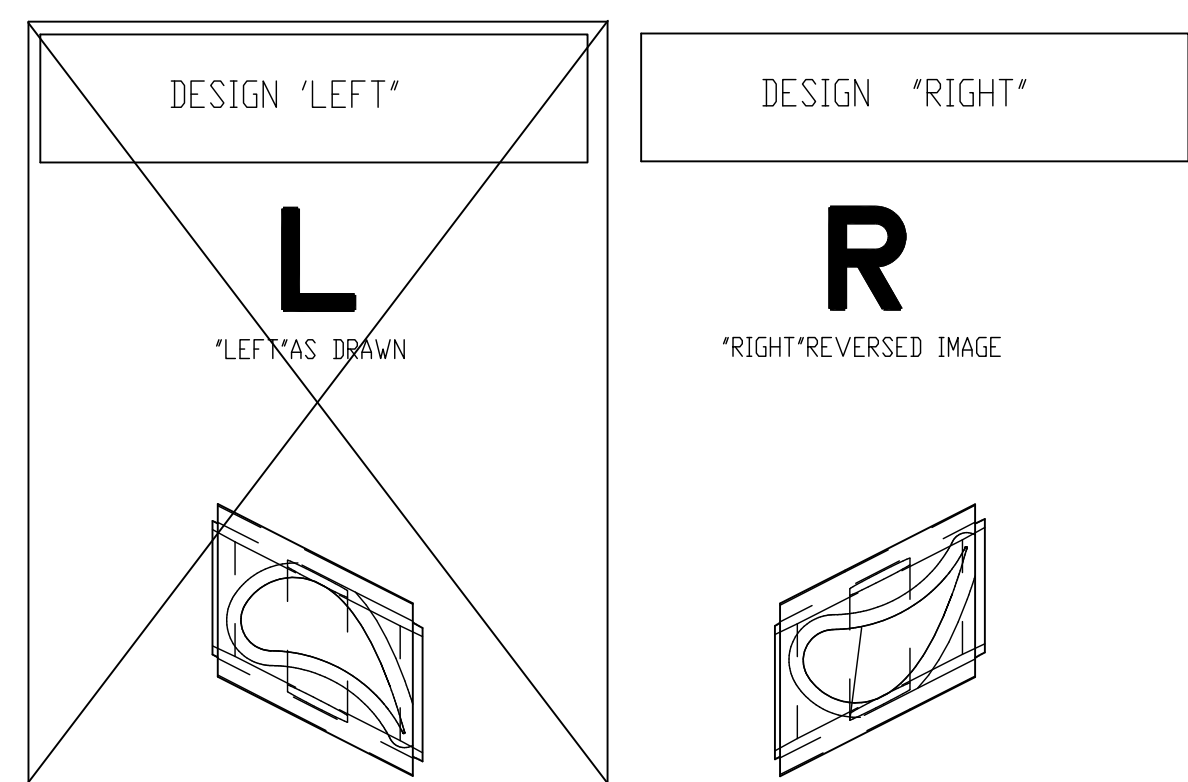
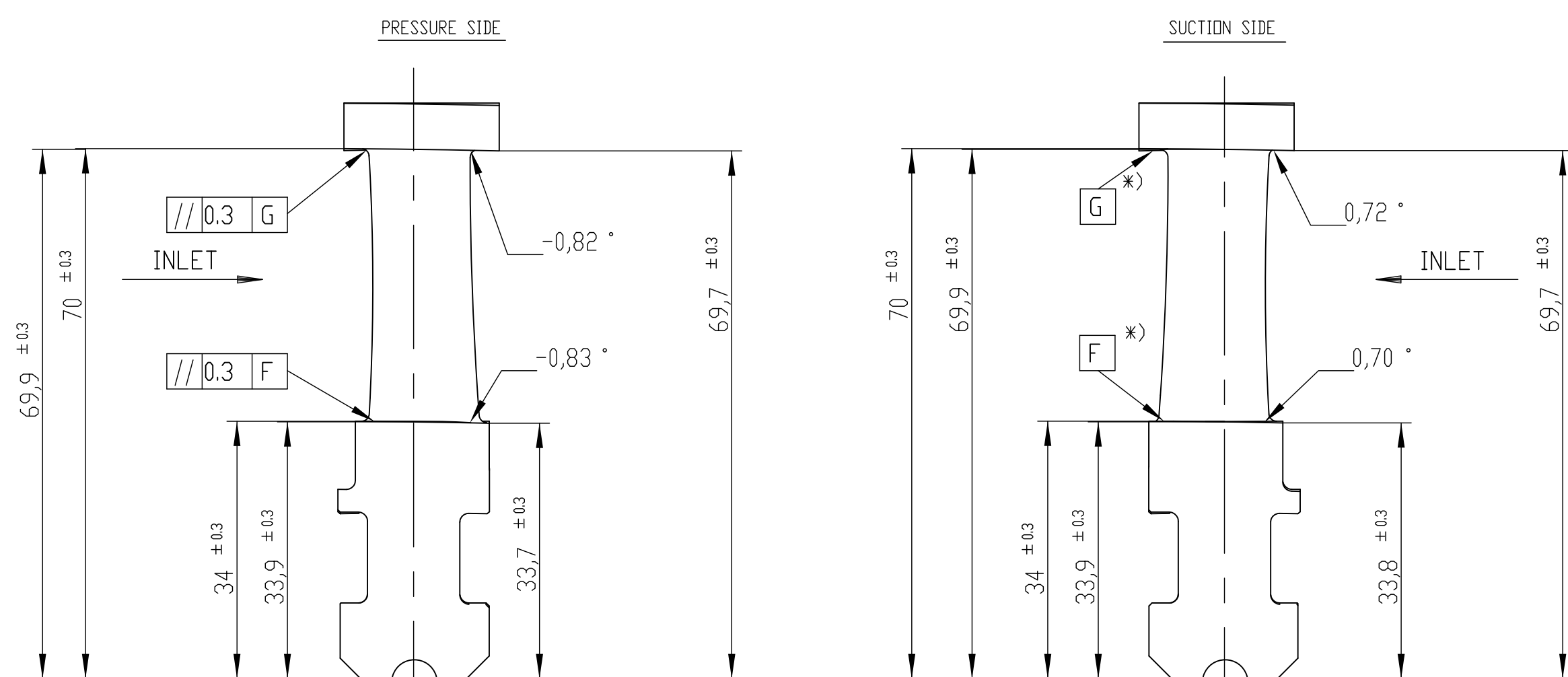


10/10



*) RELATED TO ADJACENT BLADE

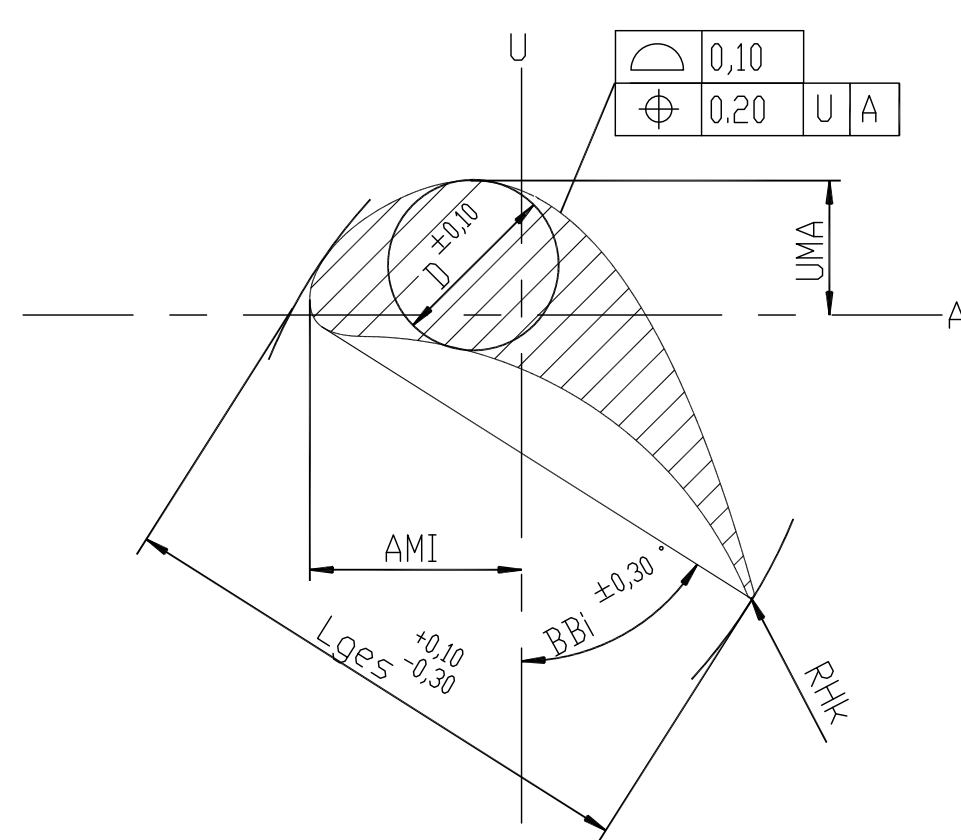


SECTION	AX	Hx	Lges	AMI	LMA	RHk	BBi	D
A1 - A1		10.0	19.21	6.52	10.14	0.08	60.08	7.18
A2 - A2		0.0	18.89	5.92	4.69	0.09	53.55	6.45
A12-A12		10.0	18.91	5.50	3.83	0.10	47.70	5.79
A20-A20		18.0	19.18	5.40	4.43	0.10	44.31	5.26
A28-A28		26.0	19.63	5.51	4.98	0.11	42.24	4.69

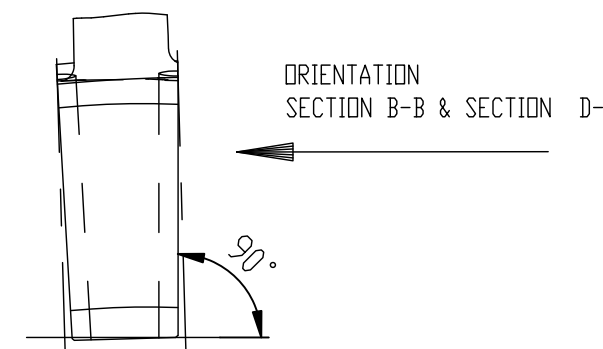
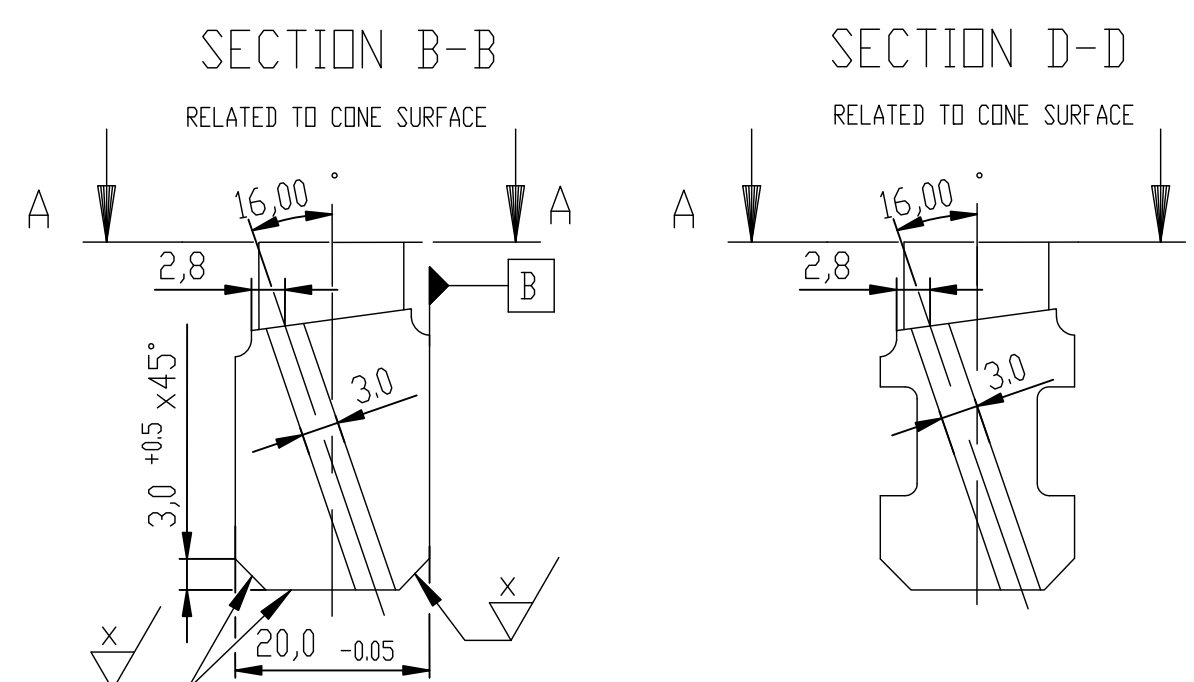
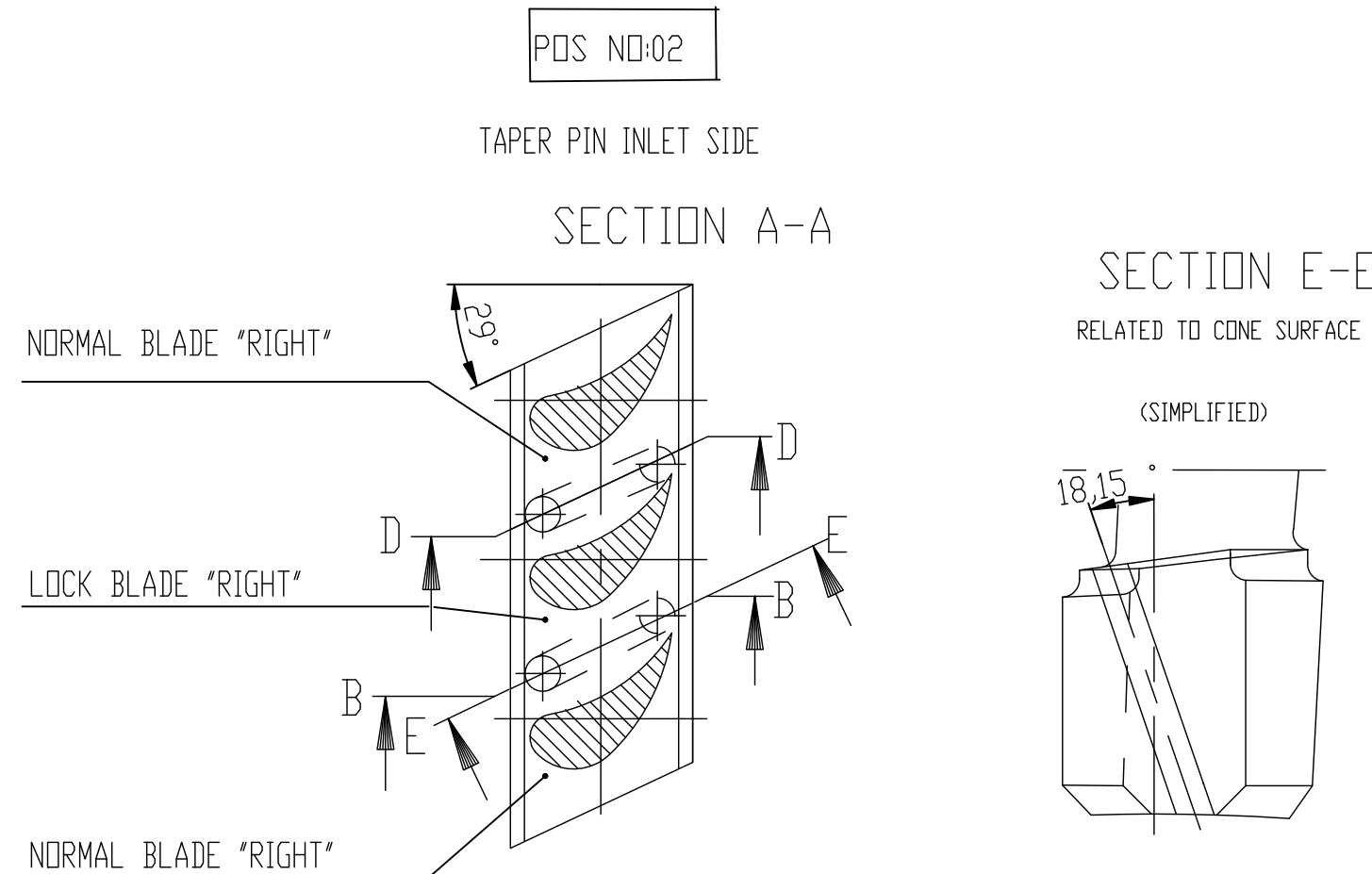
LOCAL SMALLEST RADIUS OF CURVATURE ON PRESSURE SIDE: 7.6 MM

TECHNICAL REQUIREMENTS

TOLERANCES



RAW PART IN POSITION OF CENTERING (WITHOUT SCALE)
(RELATED TO MINIMAL DIMENSION)



NOTES:


1. STRAK NUMBER: 80066
2. NUMBER OF BLADES/ROW: 131
(INCLUDING LOCK BLADE)


07 (RIGHT)	0
ROW NO.	VA

TYPE OF PRODUCT OR NAME OF CUSTOMER/PROJECT
--

BPHARAT HEAVY ELECTRICALS LTD.

BHEL
BHARAT HEAVY ELECTRICALS LTD.
HYDERABAD

				
DEPT				

DEL. I.T.D	UNTO. DIMS.		SCALE	WEIGHT
CODE	GR. C/M/E		NTS	0.09

415	67101	4 4	NTS	0,07
TITLE				

TITLE MOVING BLADE-RIGHT

S-999-R20-TR07/036A2S

15

This Drawing is printed from Engineering
Therefore signat

	-R.R-	-R.R-	-R
	DRAWING NO.		

CARD CODE	0-101-02-62011	0
--------------	----------------	---

SHT. No 07	NO. OF SHT. 27
------------	----------------

	16
--	----

ing Digital Archive System (EDAS) features are not essentially required.

THE INFORMATION ON THIS DOCUMENT IS THE PROPERTY OF BHARAT HEAVY ELECTRICALS LIMITED. IT MUST NOT BE USED DIRECTLY OR INDIRECTLY IN ANY WAY DETRIMENTAL TO THE INTEREST OF THE COMPANY

GENERAL DIMENSIONAL LIMITS, FITS & TOLERANCES AS PER HY0230261

[illegible]